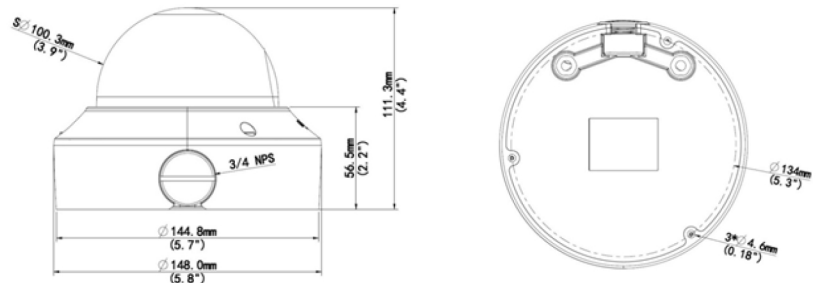


Key Features

- ❖ Day/Night Functionality
- ❖ Smart IR, up to 30m (98 ft) IR distance
- ❖ Up to 120 dB Optical WDR (Wide Dynamic Range)
- ❖ Lowlight Surveillance
- ❖ 3D DNR (Digital Noise Reduction)
- ❖ H.265, H.264, MJPEG
- ❖ Embedded smart algorithm
- ❖ Triple streams
- ❖ ROI (Region of Interest)
- ❖ 9:16 corridor mode
- ❖ ONVIF Conformance
- ❖ Built-in PoE splitter that outputs DC 12V
- ❖ Wide temperature range: -40°C to 60°C (-40°F to 140°F)
- ❖ Wide voltage range of ±25%
- ❖ IK10 vandal resistant
- ❖ IP66



Dimensions



Technical Specification

Model	SCM-VDM02VFIR-WD88DP
Product Name	2.0 Megapixel WDR, IR Fixed Dome Network Camera
Camera	
Sensor	1/3", 2 Megapixel, Progressive Scan CMOS
Shutter	Auto/Manual, 1/6~1/100000 s
Lens	2.8~12mm @F1.4; Angle of view: 95° ~29°
Zoom/Focus	Manual
Min. Illumination	Colour: 0.02 Lux (F1.4, AGC ON) 0 Lux with IR on
Day/Night	IR-cut filter with auto switch (ICR)
IR Range	Up to 30m (98 ft) IR range
S/N	>55 dB
WDR	Optical WDR (up to 120 dB)

Securicorp Systems UK Ltd, All Rights Reserved. This document is for planning purposes only and is not intended to modify or supplement any specifications or warranties relating to product. Securicorp Systems UK Ltd may make changes to specifications and descriptions without notice.



Video	
Max. Resolution	1920 x 1080
Video Compression	H.265,H.264,MJPEG
Frame Rate	1080P (1920 x 1080) @30 fps; 1080P (1920 x 1080) @25fps
9:16 Corridor Mode	Supported
ROI	Supported
Video Streaming Available	Triple
OSD	Up to 8 OSDs
Privacy Mask	Up to 4 areas
Smart	
Behavior Detection	Intrusion, Crossing line, Motion Detection
Exception Detection	Audio Detection
Intelligent Identification	Face Detection
Statistical Analysis	People counting
Audio	
Audio Compression	G.711
Two-way audio	Supported
Storage	
Edge Storage	Micro SD, up to 128 GB
Network	
Protocols	L2TP, IPv4, IGMP, ICMP, ARP, TCP, UDP, DHCP, PPPoE, RTP, RTSP, RTCP, DNS, DDNS, NTP, FTP, UPnP, HTTP, HTTPS, SMTP, SIP, 802.1x
Compatible Integration	ONVIF, API
Interface	
Audio I/O	Audio cable Input: Impedance 35 kΩ; amplitude 2 V [p-p] Output: Impedance 600 Ω; amplitude 2 V [p-p]
Alarm I/O	1 / 1
Network	1 RJ45 10M/100M Base-TX Ethernet
Video Output	1 BNC, impedance 75 Ω; amplitude 1 V [p-p]
Reset	1 Reset Button
Power Output	DC12V Power Output With PoE
General	
Power	12 V DC, or PoE (IEEE802.3 af) Power consumption: Max.6.6 W (PoE :Max.7.2 W)
Dimensions (Ø x H)	Φ148 x 111.3 mm (Ø5.8" x 4.4")
Weight	0.75 kg (1.7 lb)
Working Environment	-40° C ~ +60° C (-40° F ~ 140° F), Humidity ≤ 95% RH (non-condensing)
Vandal Resistant	IK10
Ingress Protection	IP66

Securicorp Systems UK Ltd, All Rights Reserved. This document is for planning purposes only and is not intended to modify or supplement any specifications or warranties relating to product. Securicorp Systems UK Ltd may make changes to specifications and descriptions without notice.